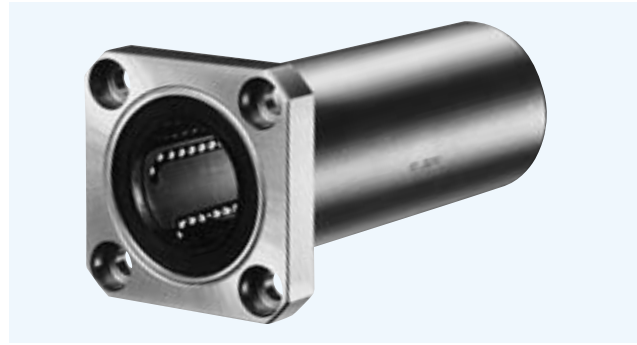


SWK-W TYPE

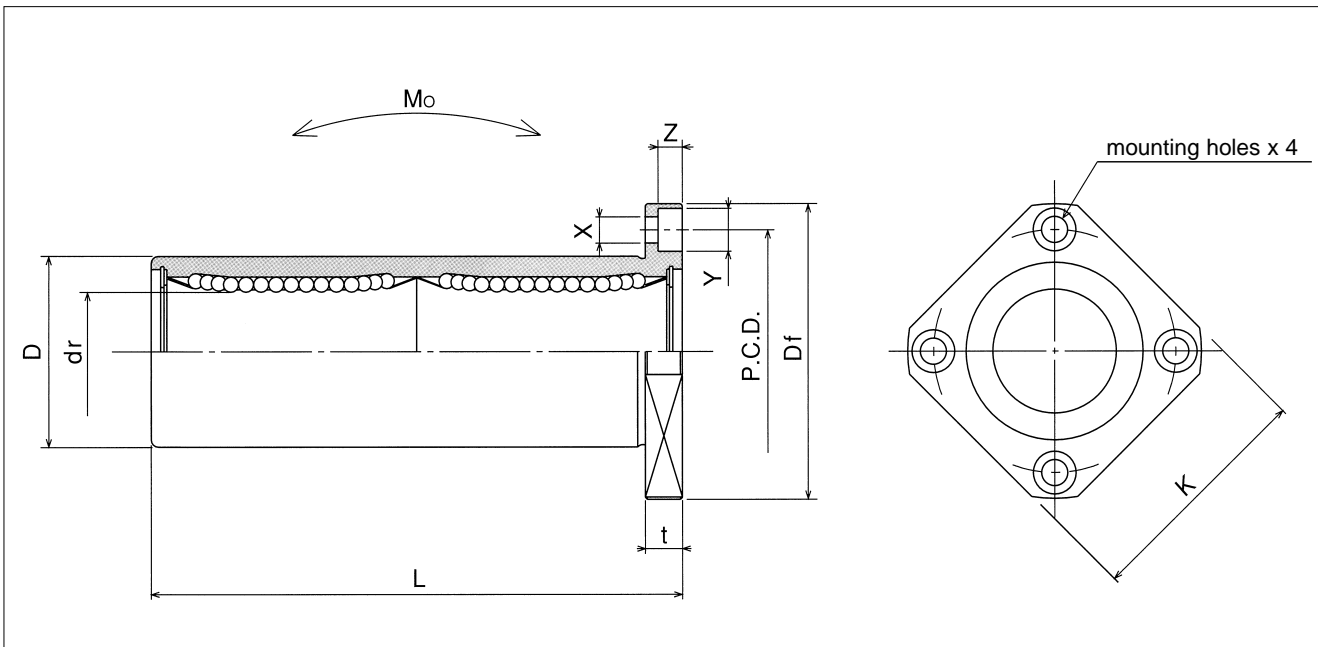
— Square Flange Double-Wide Type —

This type is an inch dimension series mainly used in the U.S.



part number structure											
example	SWSK 16 G W UU - SK										
specification	<table border="1"> <tr> <td>SWK</td> <td>standard</td> </tr> <tr> <td>SWSK</td> <td>anticorrosion</td> </tr> </table>	SWK	standard	SWSK	anticorrosion						
SWK	standard										
SWSK	anticorrosion										
inner contact diameter	16										
retainer material	<table border="1"> <tr> <td>blank</td> <td>steel</td> </tr> <tr> <td>G</td> <td>resin</td> </tr> </table>	blank	steel	G	resin						
blank	steel										
G	resin										
double-wide type	UU										
outer cylinder surface treatment	<table border="1"> <tr> <td>blank</td> <td>no surface treatment</td> </tr> <tr> <td>SK</td> <td>electroless nickel plating</td> </tr> <tr> <td>RD</td> <td>raydent treatment</td> </tr> <tr> <td>SB</td> <td>black oxide*</td> </tr> <tr> <td>SC</td> <td>industrial chrome plating</td> </tr> </table> <p>*not available in SWSK type</p>	blank	no surface treatment	SK	electroless nickel plating	RD	raydent treatment	SB	black oxide*	SC	industrial chrome plating
blank	no surface treatment										
SK	electroless nickel plating										
RD	raydent treatment										
SB	black oxide*										
SC	industrial chrome plating										
seal	<table border="1"> <tr> <td>blank</td> <td>without seal</td> </tr> <tr> <td>UU</td> <td>seals on both sides</td> </tr> </table>	blank	without seal	UU	seals on both sides						
blank	without seal										
UU	seals on both sides										

part number				dr		D		L
standard		anticorrosion		inch	tolerance	inch	tolerance	$\pm .012$ ± 0.3 inch mm
steel retainer	resin retainer	stainless retainer	resin retainer	mm	inch/ μ m	mm	inch/ μ m	
SWK 4W	SWK 4GW	SWSK 4W	SWSK 4GW	.2500 6.350	0 -.00040	.5000 12.700	$^{0}_{-13}$ -.00050	1.3750 34.925
SWK 6W	SWK 6GW	SWSK 6W	SWSK 6GW	.3750 9.525		0 -10	.6250 15.875	0 -.00065
SWK 8W	SWK 8GW	SWSK 8W	SWSK 8GW	.5000 12.700	0 -10	.8750 22.225	0 -16	2.3750 60.325
SWK10W	SWK10GW	SWSK10W	SWSK10GW	.6250 15.875	0 -12	1.1250 28.575	0 -19	2.8125 71.438
SWK12W	SWK12GW	SWSK12W	SWSK12GW	.7500 19.050	0 -12	1.2500 31.750	0 -19	3.0937 78.581
SWK16W	SWK16GW	SWSK16W	SWSK16GW	1.0000 25.400	0 -15	1.5625 39.688	0 -22	4.2813 108.744
SWK20W	SWK20GW	SWSK20W	SWSK20GW	1.2500 31.750	0 -15	2.0000 50.800	0 -25	5.0000 127.000
SWK24W	SWK24GW	SWSK24W	SWSK24GW	1.5000 38.100	0 -15	2.3750 60.325	0 -25	5.6875 144.463
SWK32W	SWK32GW	SWSK32W	SWSK32GW	2.0000 50.800	0 -15	3.0000 76.200	0 -25	7.7500 196.850



major dimensions					eccentricity inch μ m	perpen- dicularity inch μ m	basic load rating		allowable static moment M_o N · m	mass g	shaft diameter inch mm
flange							dynamic C N	static C_o N			
Df inch mm	K inch mm	t inch mm	P.C.D. inch mm	X×Y×Z inch mm							
1.2500 31.750	1.0000 25.400	.2188 5.556	.8750 22.225	.1563 × .2500 × .1406 3.969 × 6.350 × 3.572	.0006 15	.0006 15	323	530	2.0	33	1/4 6.350
1.5000 38.100	1.2500 31.750	.2500 6.350	1.0625 26.988	.1875 × .2969 × .1719 4.763 × 7.541 × 4.366			353	630	2.7	45	3/8 9.525
1.7500 44.450	1.3750 34.925	.2500 6.350	1.3125 33.338	.1875 × .2969 × .1719 4.763 × 7.541 × 4.366			813	1,570	11.5	106	1/2 12.700
2.0000 50.800	1.5000 38.100	.2500 6.350	1.5625 39.688	.1875 × .2969 × .1719 4.763 × 7.541 × 4.366			1,230	2,350	20.0	200	5/8 15.875
2.1875 55.563	1.6875 42.863	.3125 7.938	1.7188 43.656	.2188 × .3438 × .2031 5.556 × 8.731 × 5.159	.0008 20	.0008 20	1,370	2,740	26.5	240	3/4 19.050
2.5000 63.500	2.0000 50.800	.3125 7.938	2.0313 51.594	.2188 × .3438 × .2031 5.556 × 8.731 × 5.159			1,570	3,140	41.2	470	1 25.400
3.1250 79.375	2.5000 63.500	.3750 9.525	2.5625 65.088	.2813 × .4063 × .2656 7.144 × 10.319 × 6.747	.0010 25	.0010 25	2,500	5,490	84.8	935	1-1/4 31.750
3.7500 95.250	3.0000 76.200	.5000 12.700	3.0625 77.788	.3437 × .5000 × .3281 8.731 × 12.700 × 8.334			3,430	8,040	143	1,460	1-1/2 38.100
4.3750 111.125	3.5000 88.900	.5000 12.700	3.6875 93.662	.3437 × .5000 × .3281 8.731 × 12.700 × 8.334	.0012 30	.0012 30	6,080	15,900	399	2,620	2 50.800

1N \approx 0.225lbs 1N·m \approx 0.738lb·ft